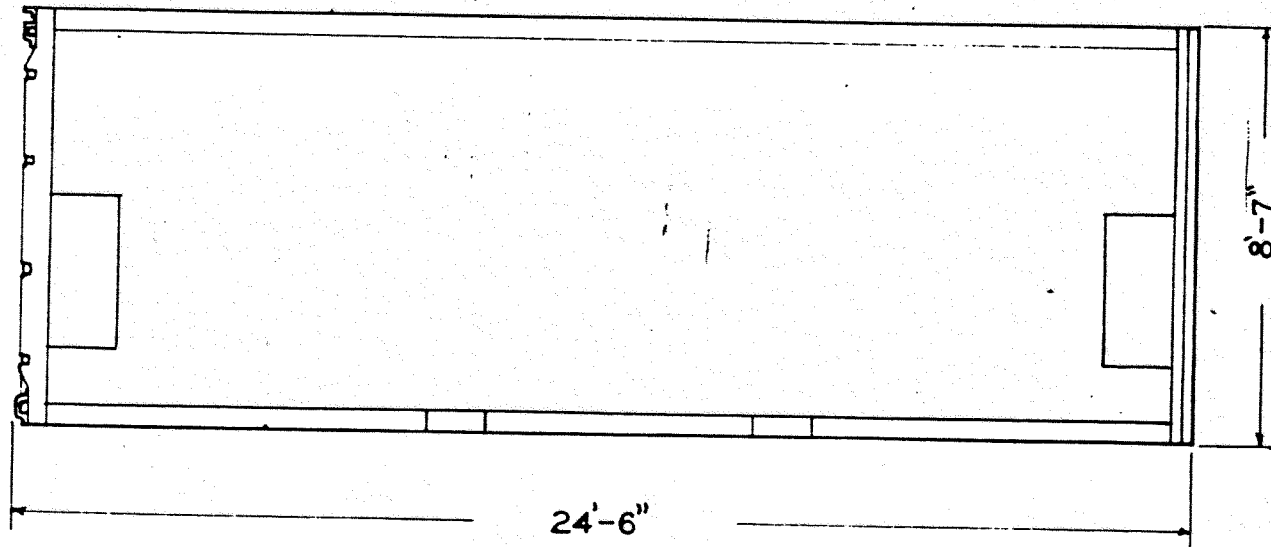


UNIT RAIL BOXS

~~303-33~~
303-33



BUILT BY
DATE BUILT
REBUILT BY
PURCHASED FROM
PLACED IN SERVICE
UNDERFRAME
LIGHTWEIGHT-LBS.
CAPACITY

BROWN TRAILERS INC.
1959
CONSOLIDATED FREIGHTWAY
1961
STEEL
3940
50,000 LBS 1,375 CU. FT.

GENERAL DIMENSIONS:

LENGTH	24'-6"
MAX. HEIGHT	8'-7"
MAX. WIDTH	8'-0"
INSIDE LENGTH	23'-6"
INSIDE WIDTH	7'-7"
INSIDE HEIGHT	7'-6"
DOUBLE END DOORS, CLEAR OPENING	7'-4" X 7'-6"