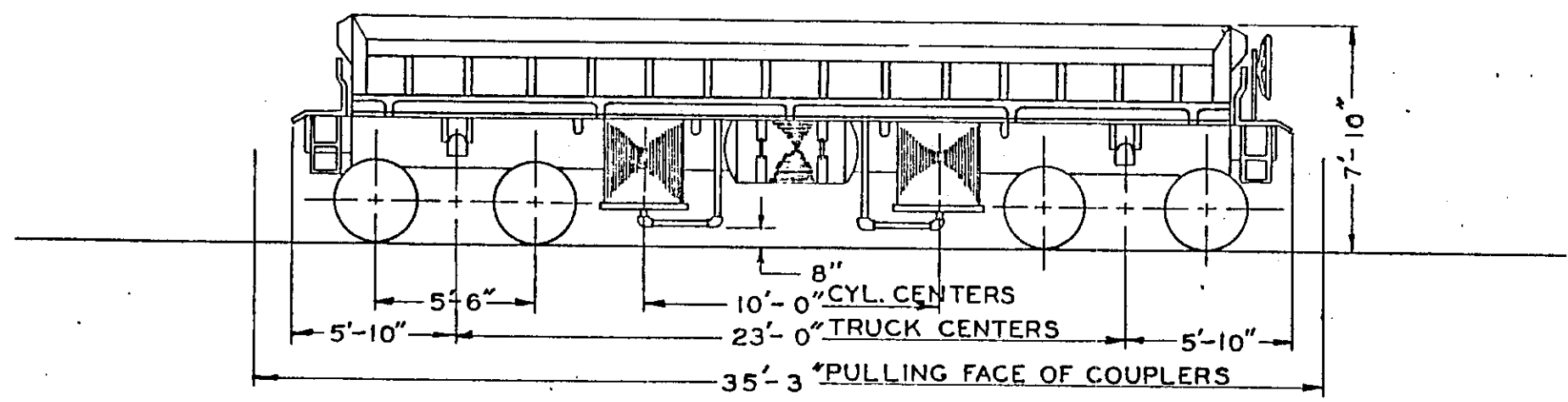


15110-15123 DUMP CARS



BUILT BY	WESTERN WHEELED SCRAPER CO.
DATE BUILT	1928 & 1934
REBUILT BY	1956 A.R.R.
PURCHASED FROM	WESTERN WHEELED SCRAPER CO.
PLACED IN SERVICE	1928 & 1934
WHEELS	33"
TRUCKS	UNIT
AXLES	5 1/2" X 10"
BEARINGS	FRICTION
UNDERFRAME	STEEL
LIGHTWEIGHT-LBS.	37,000*
CAPACITY	100,000* 28 YDS.
COUPLERS	SHANK 6 1/4" X 8" BM. OP.
YOKES	VERTICAL W/ HORIZ. 6 X 1 1/2" KEY
AIRBRAKES	AB-10 X 12 CYL.
HANDBRAKES	MINER POWER

GENERAL DIMENSIONS:	
TRAIN LENGTH	35'-3"
MAX. HEIGHT	7'-10"
MAX. WIDTH OVER SIDE SILLS	10'-9"
INSIDE LENGTH TOP	29'-2"
INSIDE LENGTH BOTTOM	27'-4"
INSIDE WIDTH TOP	9'-7"
INSIDE WIDTH BOTTOM	9'-0"
INSIDE HEIGHT	2'-11"

CK'D 2-83 RCK

ALASKA RR