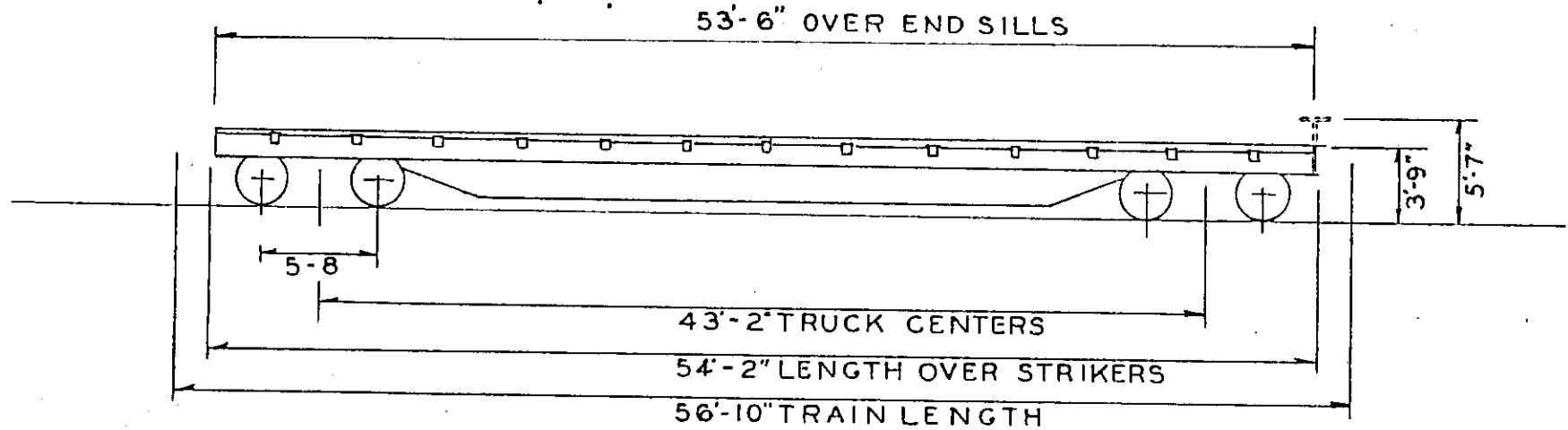


# 12900-12999 FLAT CARS



BUILT BY  
 DATE BUILT  
 PURCHASED FROM  
 PLACED IN SERVICE  
 WHEELS  
 TRUCKS  
 AXLES  
 BEARINGS  
 LIGHTWEIGHT - LBS.  
 CAPACITY - LBS.  
 COUPLERS  
 YOKES  
 AIRBRAKES  
 HANDBRAKES

SOUTHERN IRON & EQUIPMENT CO.  
 1976  
 S.I. & E.CO.  
 1976  
 33"  
 6'X11"  
 BRENCO  
 53,000  
 154,000  
 NATIONAL  
 NATIONAL

GENERAL DIMENSIONS:  
 TRAIN LENGTH  
 MAX. HEIGHT  
 WIDTH OVER SIDE SILLS  
 MAX. WIDTH  
 RAIL TO FLOOR

56'-10"  
 5'-7"  
 9'-4"  
 10'-6"  
 3'-9"

CK'D 2-83 RCK

ALASKA RR