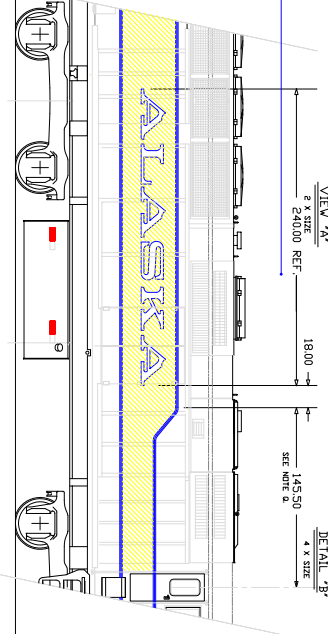
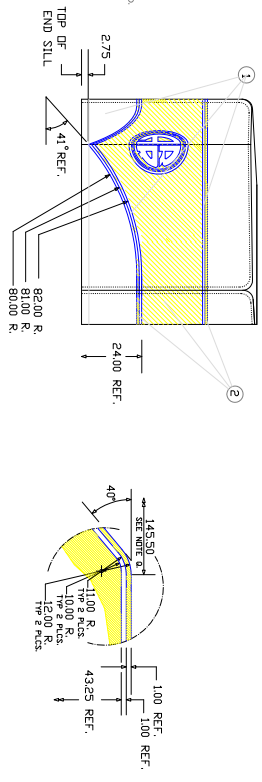


GENERAL NOTES:

- A. PAINT CABOARD WITH IT. 1. GRADED AND STORE WITH IT. 2. YELLOW AS SHOWN IN ELEVATION VIEWS.
- B. PAINT INTERIOR OF CAB WITH IT. 6. BEIGE.
- C. PAINT INTERIOR OF LONG AND SHORT HEDDS WITH IT. 5. GAUZE GRAY.
- D. PAINT ALL GRAB IRONS, CUT LATCHES AND HORIZONTALS WITH IT. 2. YELLOW.
- E. GRAB IRONS LOCATED DIRECTLY WITHIN THE YELLOW STRIP ARE TO BE PAINTED WITH IT. 1. GULCH.
- F. GRAB IRON FEET MAY BE PAINTED SAME AS BACKGROUND COLOR.
- G. PAINT ALL STANCHIONS WITH IT. 1. GULCH.
- H. PAINT FUEL FILLER SHIELDS & SHIRT GLASS HANGERS W/ IT. 6. RED.
- I. PAINT STRINGS ACROSS SHIRT GLASS TO INDICATE FILL LEVELS. BLUE WHITE, YELLOW SUMMER.
- J. PAINT UNDERPHONE GROUND SIDE SLITS WITH IT. 4. BLACK.
- K. PAINT RESERVOIRS AND FUEL TANK WITH IT. 3. OCEAN BLACK.
- L. PAINT TRACKS WITH IT. 9. GALUMPHUM. DO NOT PAINT WHEELS.
- M. PAINT NO ACCEPTANCES WITH IT. 4. BLACK.
- N. DO NOT PAINT WHEELS, COUPLERS, CABOARD OR NON-FERROUS PARTS.
- O. ORIENT IT. 17. 30 REB IS TO THE VIEWER'S LEFT.
- P. IT. 11. CIVIL INCH NUMERALS REQUIRED ONLY WHERE NO ILLUMINATED NUMBER BORDERS ARE INSTALLED.
- Q. ADJUST THIS DIMENSION AS REQUIRED UP TO 3" IN EITHER DIRECTION TO AVOID INTERFERENCE WITH CABOARD DETAILS.
- R. CENTER IT. 10. ROUND NUMBER ON 20" YELLOW STRIP.



01234578

ALASKA

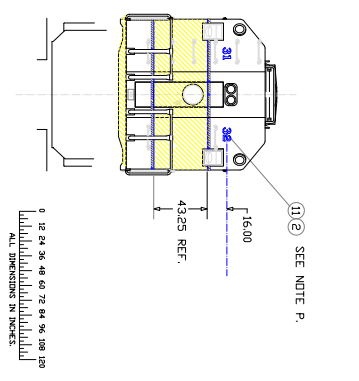
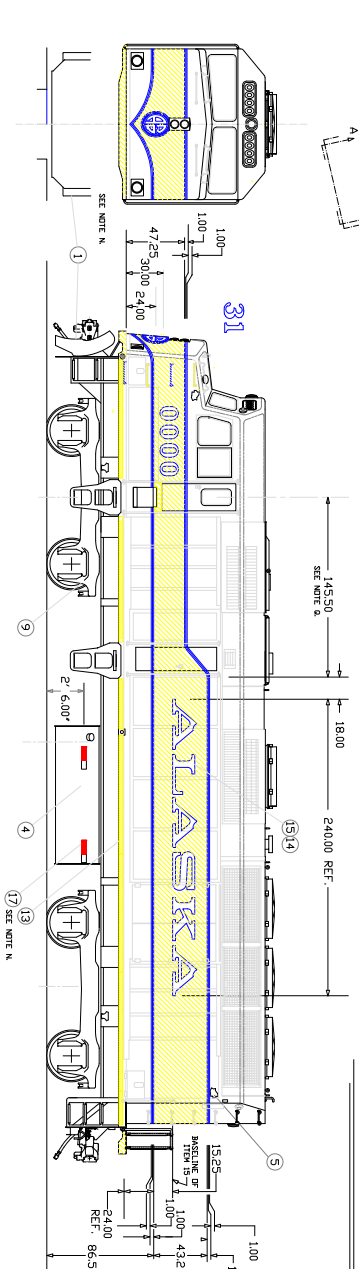


TABLE 1: BILL OF MATERIALS

IT. DESCRIPTION	REMARKS	QUANTITY/UNIT
1 BLUE PAINT	POLYURETHANE	7 GAL.
2 YELLOW PAINT	POLYURETHANE	5 GAL.
3 BLACK PAINT	POLYURETHANE	5 GAL.
4 BLACK PAINT	ALKYD ENAMEL	2 GAL.
5 SLIDE GRAY PAINT	ALKYD ENAMEL	4 GAL.
6 BEIGE PAINT	ALKYD ENAMEL	2 GAL.
7 BLACK NON-SKID	FLAT FINISH	2 GAL.
8 RED PAINT	ALKYD ENAMEL	1/2 PT.
9 ALUMINUM PAINT	ENAMEL	4 GAL.
10 NUMERALS, 15"	END 9555057	2 SETS
11 NUMERALS, 6"	END 9555058	1 SET
12 NUMERALS, 3"	END 933724 OR APPROVED ALTERNATE	97 FT.
13 DIAMOND GRADE SCOTCH-LITE	(3-M CORP) - 3" WIDE YELLOW	A/R
14 CLEAR LAQUER	'ALASKA' LETTERING	2 EA
15 'ALASKA' LETTERING	18" NOMINAL HEIGHT	1 EA
16 'ARR' 24" DIA. ROUND	DECAL SUPPLIED BY ARR	1 EA
17 DIAMOND GRADE SCOTCH-LITE	(3M 981-285) - 4" WIDE RED/WHITE	6 FT.

ALASKA RAILROAD MECHANICAL DEPARTMENT ANCHORAGE

PAINTING AND STYLING
F40 TYPE LOCOMOTIVES

DRWN: J.B. CORAN 10/29/00 REV: 3/28/03
FILE: UNIVERSY:CORAN\3003\UCDCCV\F40PNT.dwg